

MNWALK 30**Pipelines - General Information**

Pipeline Owners/Operators emergency contacts, response plans & maps are also located in the CAER Manual in the Rice County EOC.

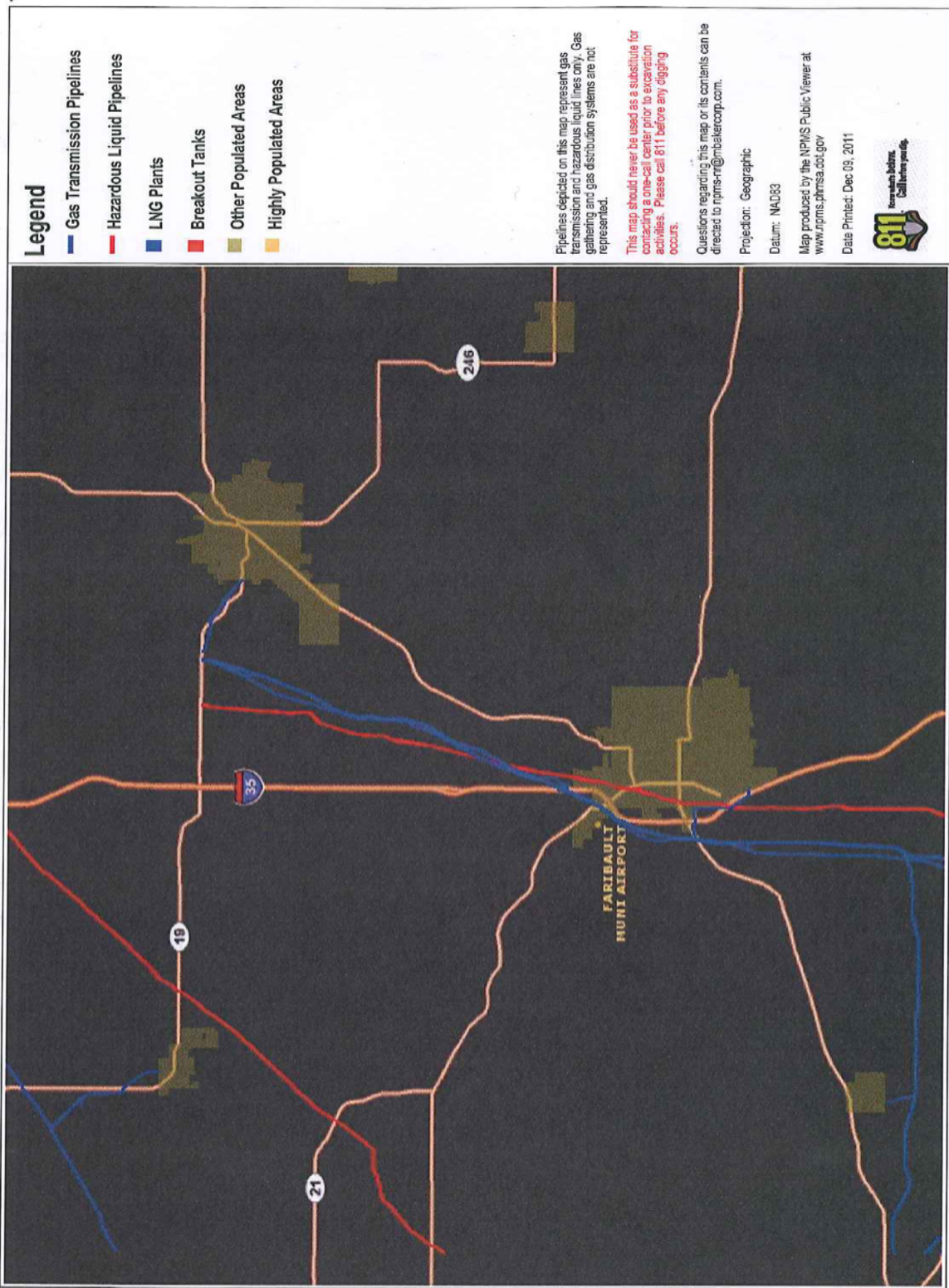
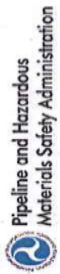
<u>Company</u>	<u>Address</u>	<u>Contact Person</u>	<u>Emergency Phone Number¹</u>
Williams Pipeline	2728 Patton Rd St. Paul, MN 55113	J. Kent Myers	918/588-3200
Koch Pipeline Corp.	6483 85th St S P.O. Box 67 Cottage Grove MN 55016	Mike Kostelecky	1-800/688-7594
Minnegasco	700 W. Linden Ave P.O. Box 1165 Minneapolis MN 55440-1165	Michael Swab	612/342-5050

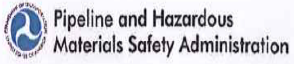
Pipelines - Product Information

<u>Company</u>	<u>Product(s)</u>	<u>DOT Emergency Response Guide No.</u>
Williams Pipeline	Hazardous	#28
	Petroleum Liquid	#27
Koch Pipeline	Petroleum Liquid	#27
Minnegasco Natural Gas		#17

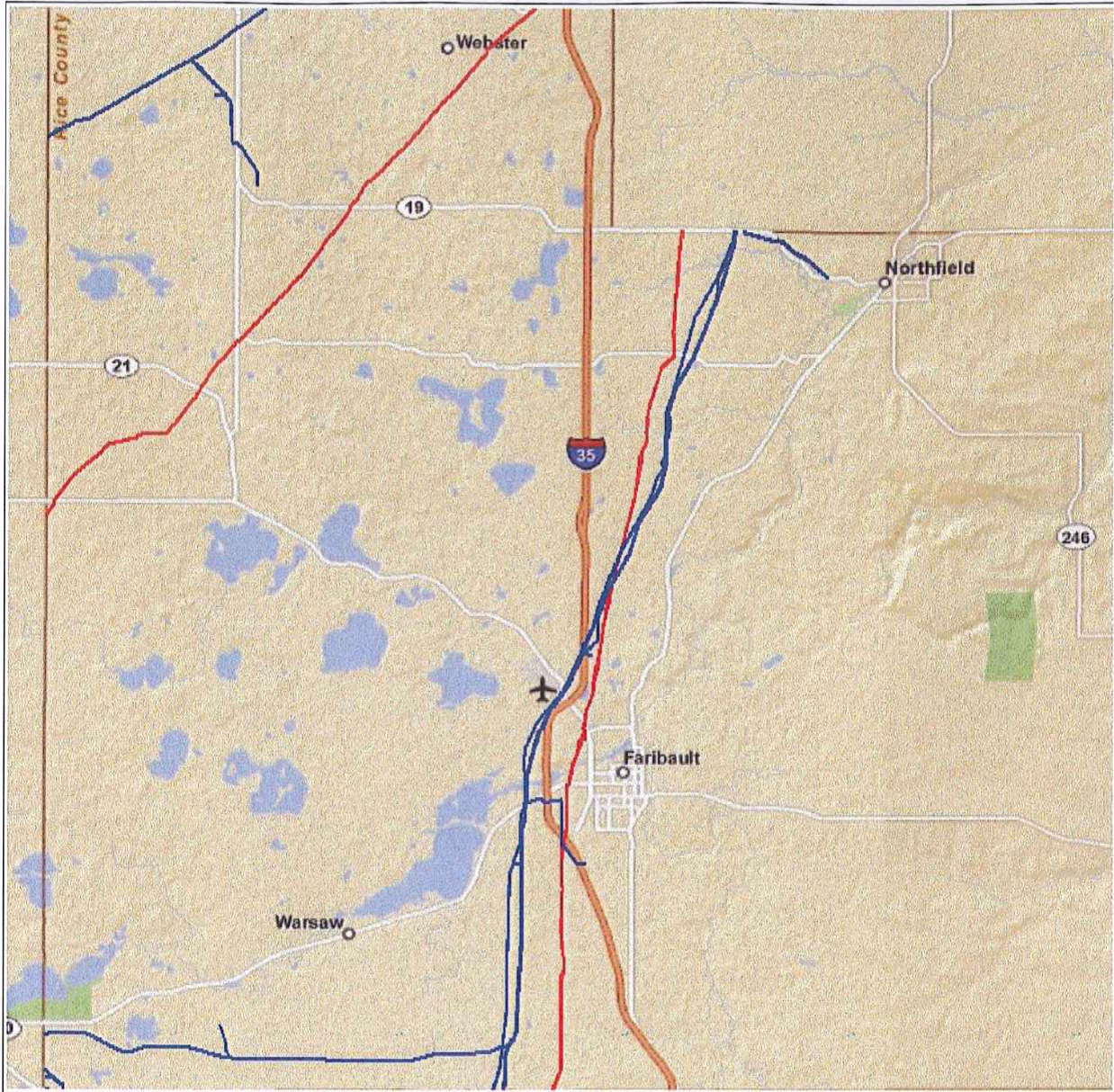
¹List a 24-hour number, if such number exists.

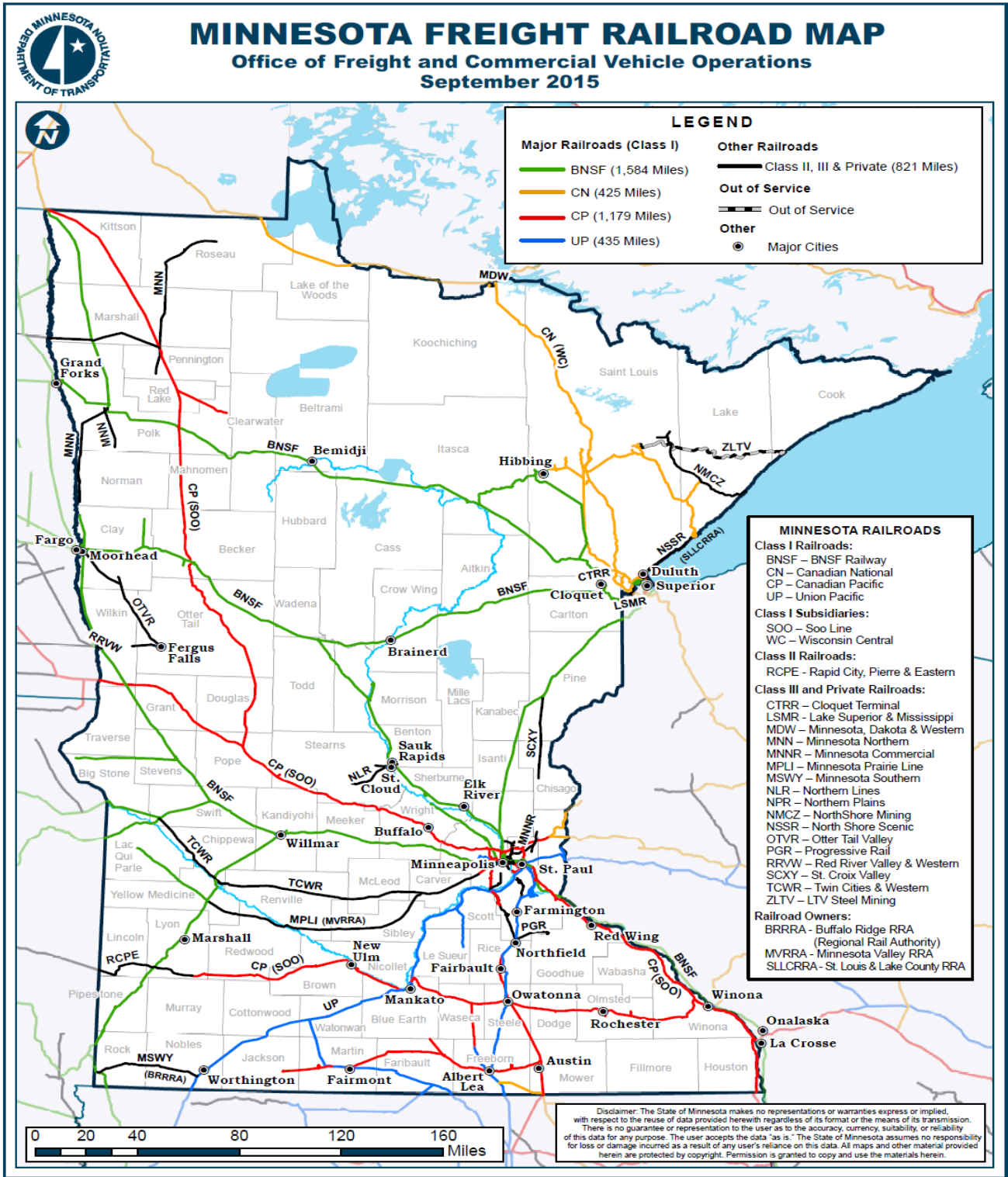
NATIONAL PIPELINE MAPPING SYSTEM

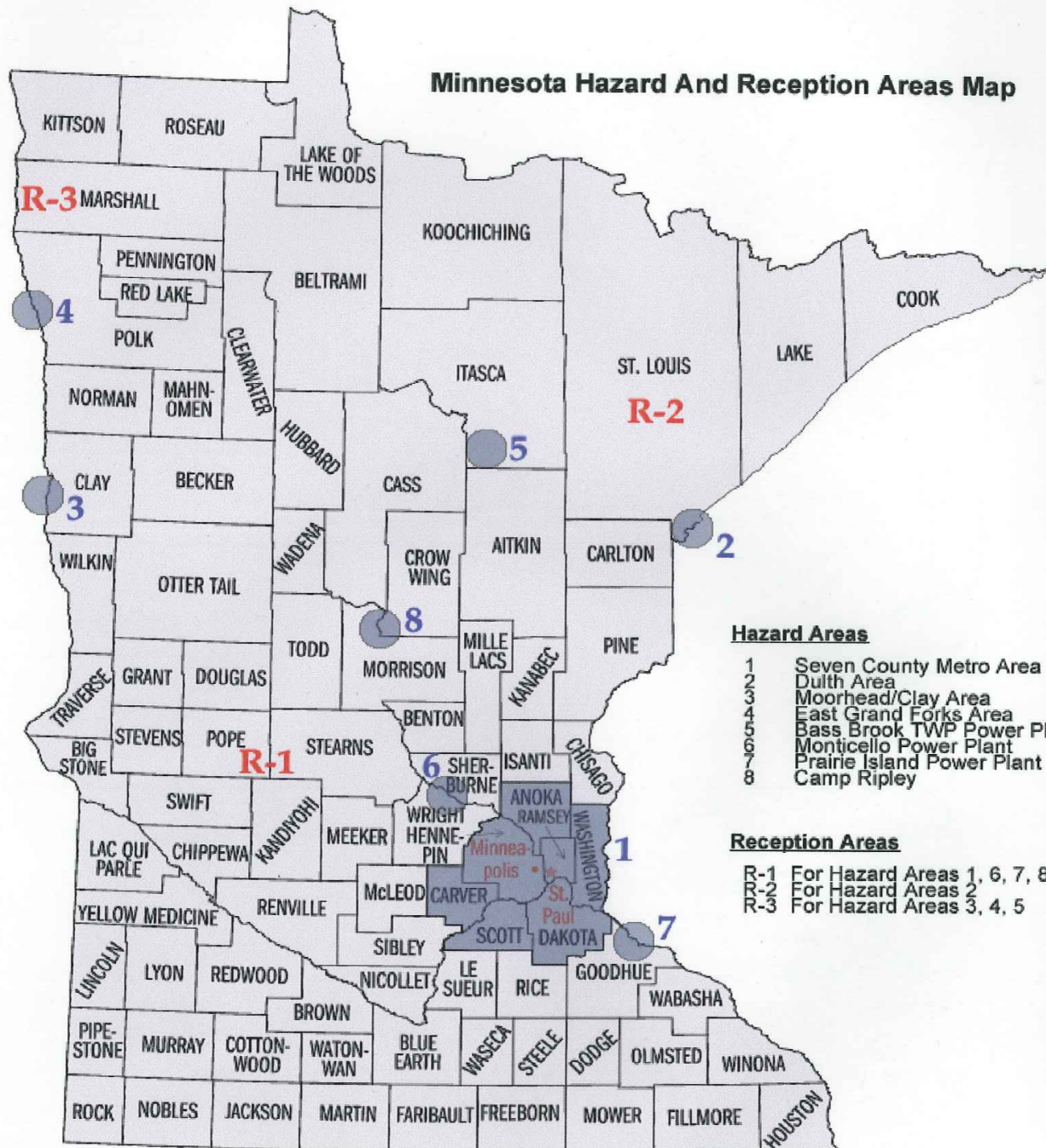




NATIONAL PIPELINE MAPPING SYSTEM







Shaded areas indicate potential blast over pressures of 2.0 pounds per square inch or more.